

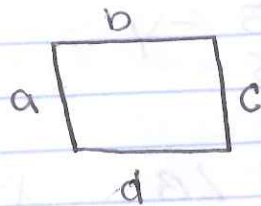
Vocabulary

Formulas in Geometry
 Perimeter - ^{length} out side of shape

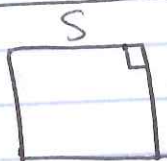
Circumference - the length of the outside of the circle

area - size inside a shape. (squared)

Perimeter -
 $P = a + b + c + d$
 - just add the sides.

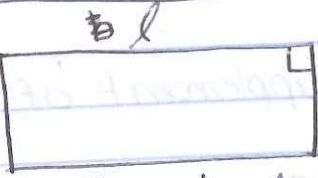


Area -
 $A = s \cdot s$ square
 $A = s^2$



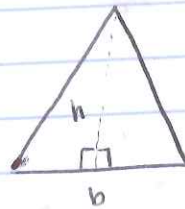
$A = s \cdot s$
 $A = s^2$

$A = l \cdot w$ rectangle



~~A = l \cdot w~~ $A = l \cdot w$

$A = \frac{1}{2} b \times h$ triangle

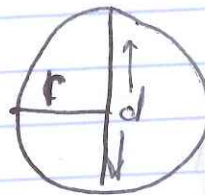


$A = \frac{1}{2} b \times h$

Circles

$\pi = 3.14$

circumference.



radius

diameter

Circumference = $\pi \cdot d$

Area -
 πr^2